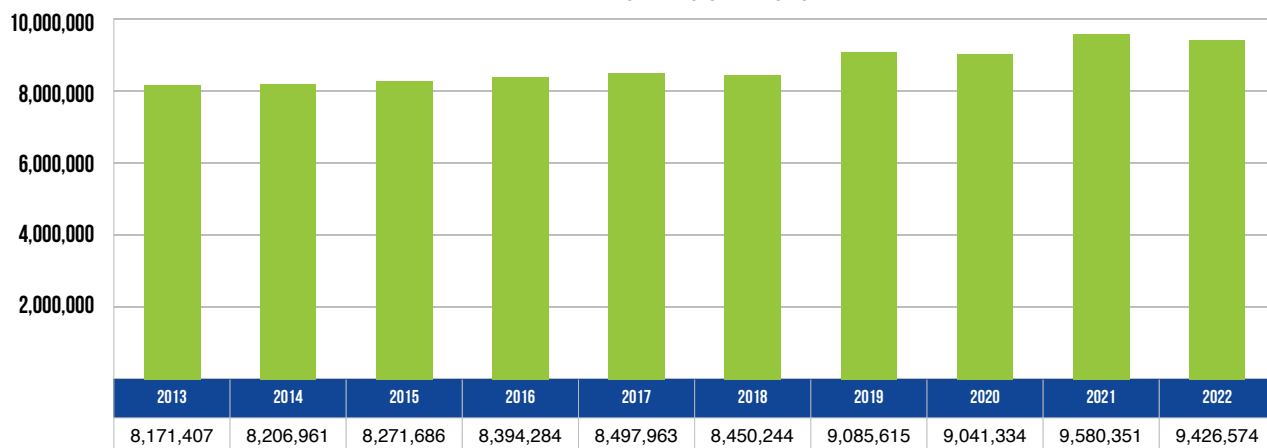


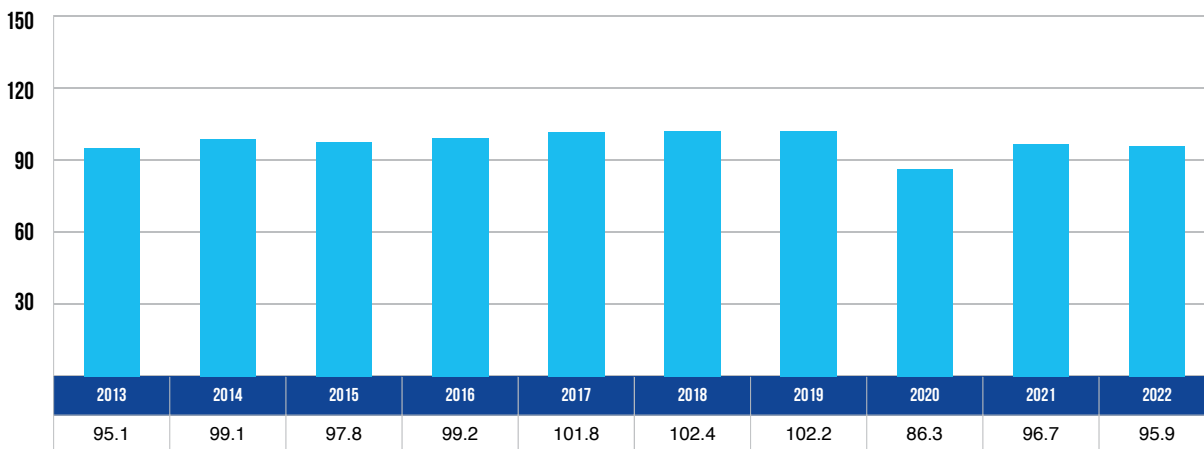
10 YEAR TRENDS-STATEWIDE

VEHICLE REGISTRATIONS



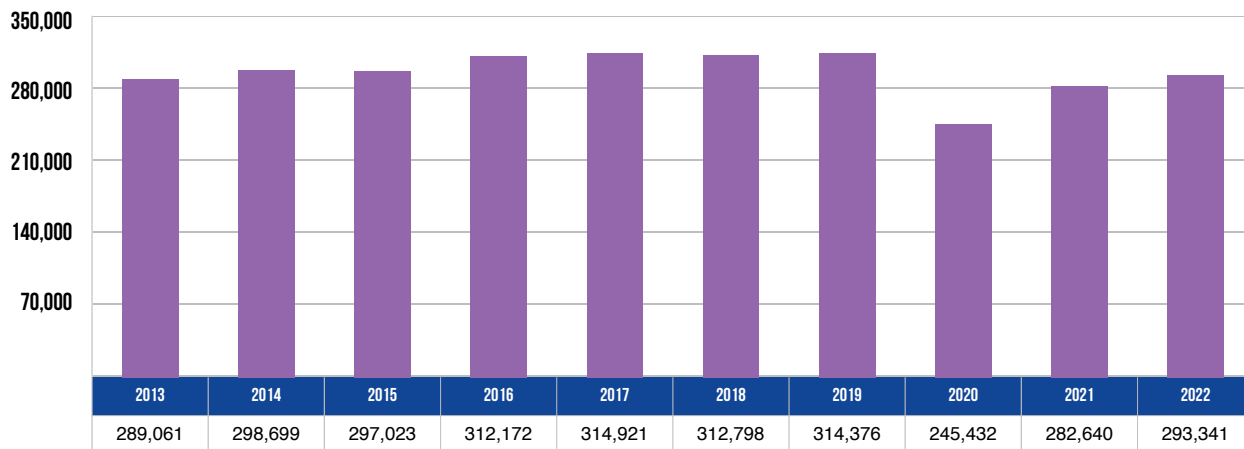
Vehicle registrations increased 15.4 percent over the 10-year period.

VEHICLE MILES TRAVELED (BILLIONS)



Vehicle miles traveled increased 0.8 percent over the 10-year period.

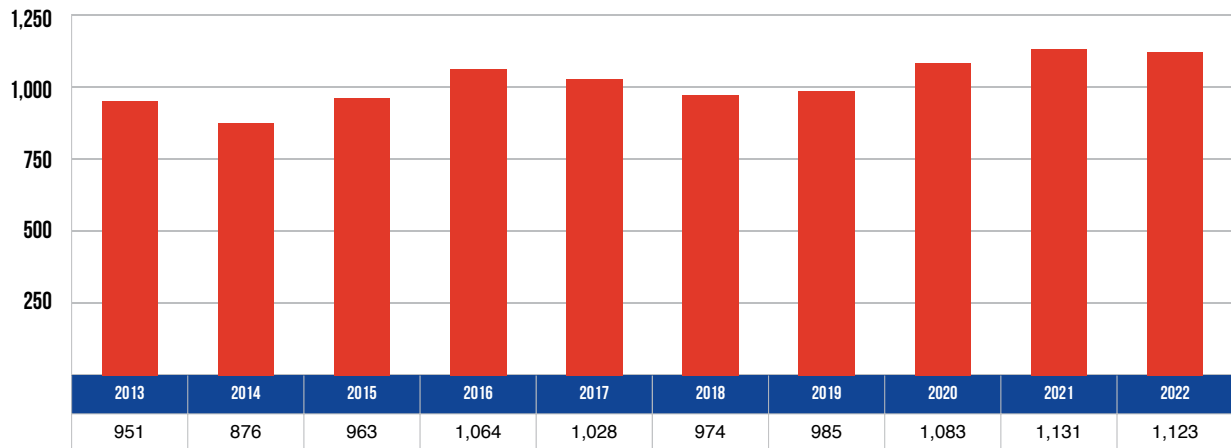
CRASHES



There were 293,341 total crashes statewide in 2022--a 1.5 percent increase from 2013.

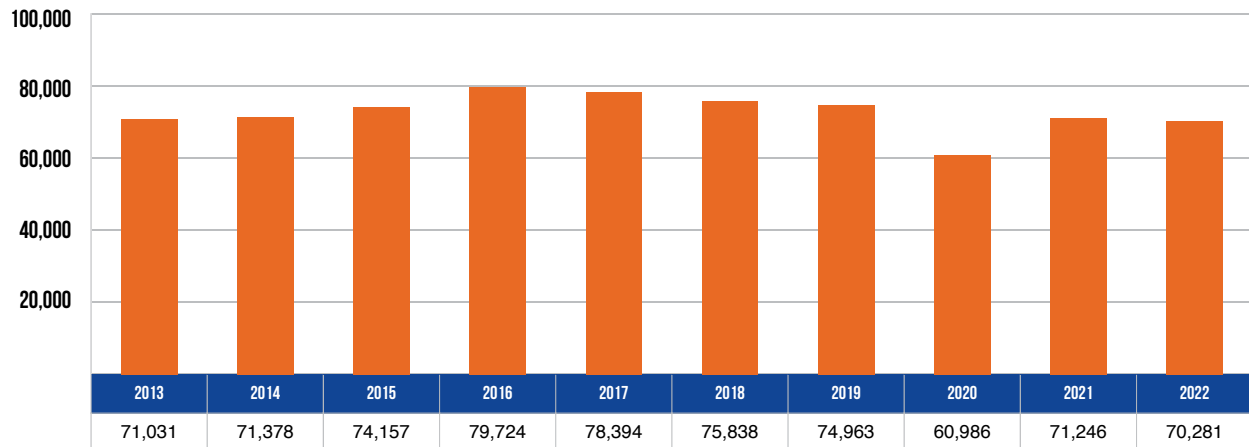
10 YEAR TRENDS-STATEWIDE (CONTINUED)

DEATHS



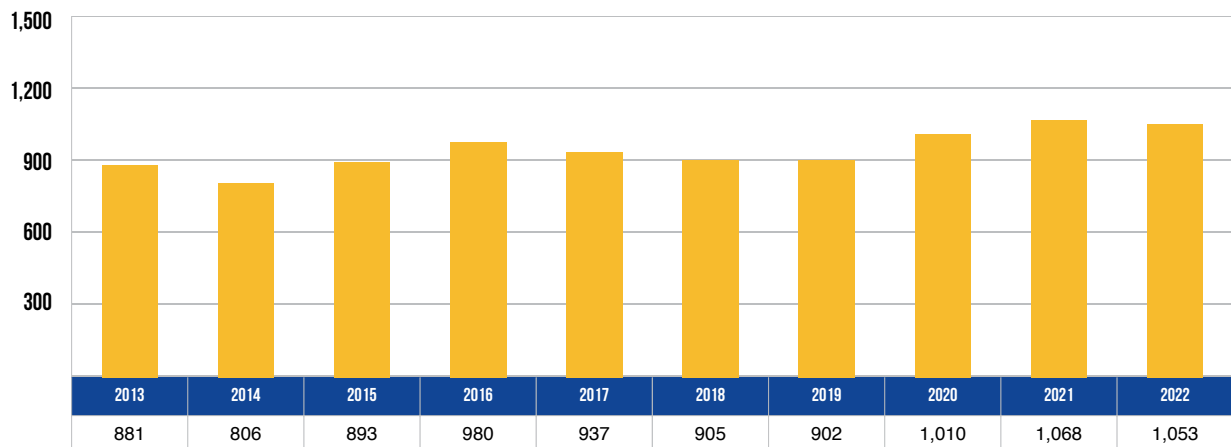
In 2022, 1,123 people died in motor vehicle crashes--an increase of 18.1 percent from 2013.

INJURIES



In 2022, 70,281 people received injuries in motor vehicle crashes--down 1.1 percent from 71,031 in 2013.

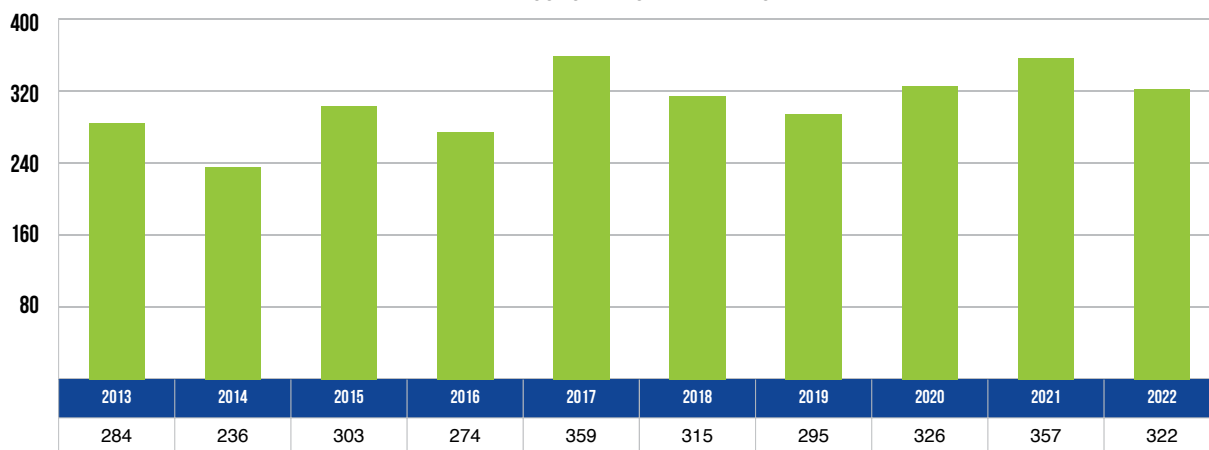
FATAL CRASHES



In 2022, there were 1,053 fatal crashes--up 19.5 percent from 881 in 2013.

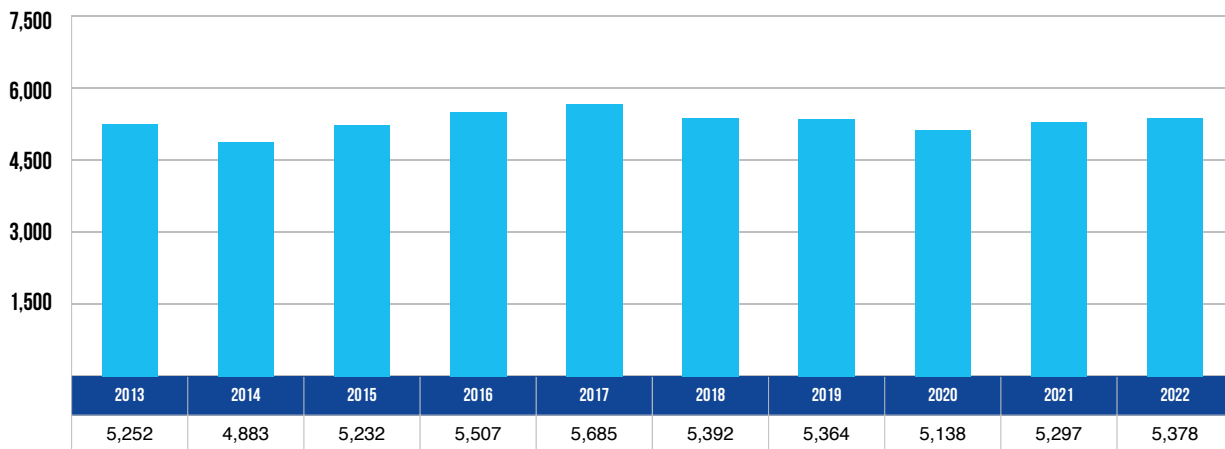
10 YEAR TRENDS-STATEWIDE (CONTINUED)

ALCOHOL-INVOLVED DEATHS



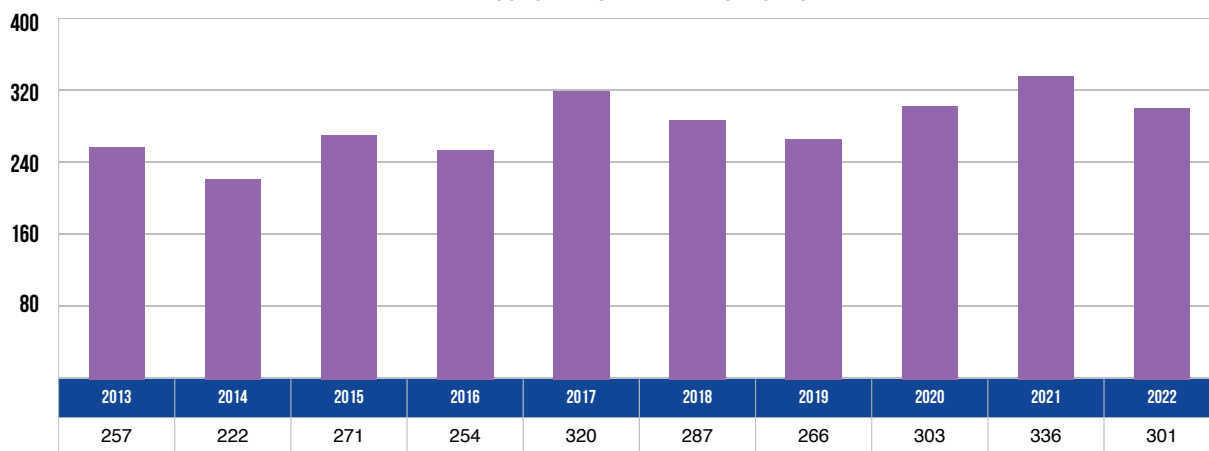
There were 322 deaths in alcohol-involved crashes in 2022--up 13.4 percent from 284 in 2013.

ALCOHOL-INVOLVED INJURIES



There were 5,378 injuries in alcohol-involved crashes in 2022--up 2.4 percent from 2013.

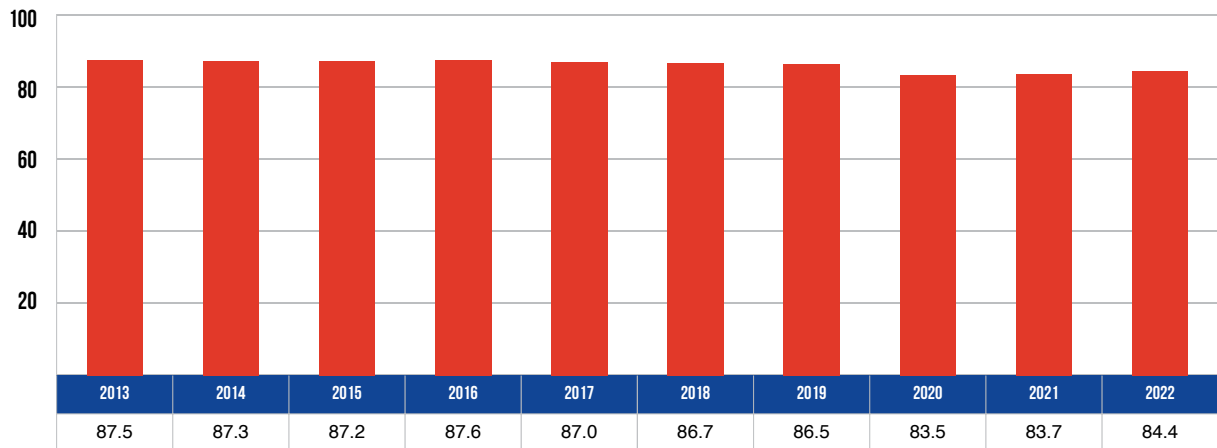
ALCOHOL-INVOLVED FATAL CRASHES



There were 301 alcohol-involved fatal crashes--up 17.1 percent from 257 in 2013.

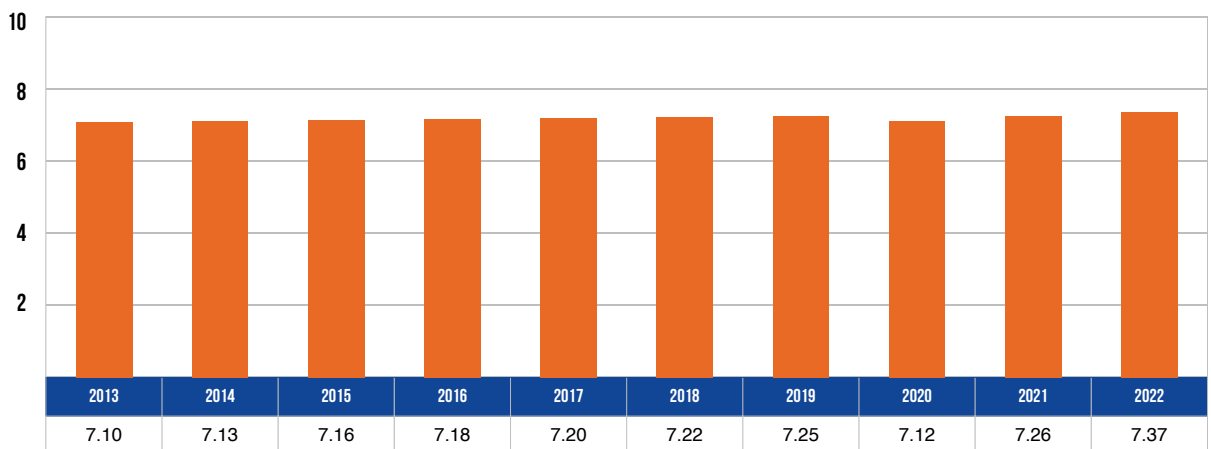
10 YEAR TRENDS-STATEWIDE (CONTINUED)

RESTRAINT USAGE IN CRASHES



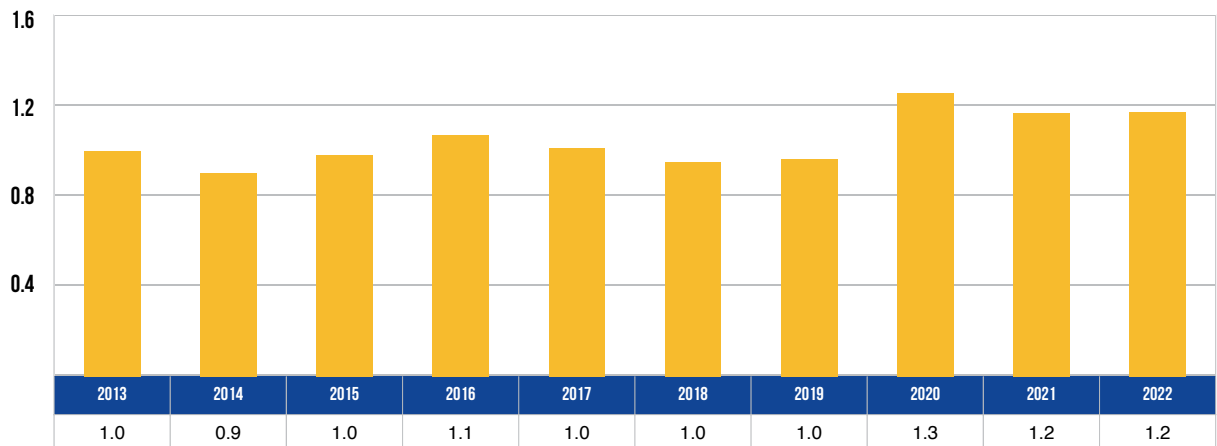
The percentage of motor vehicle occupants using restraints as reported by police in traffic crashes was 84.4 percent in 2022, down 3.6 percent from 2013.

DRIVERS IN MICHIGAN (MILLIONS)



There were 7,366,080 licensed drivers on Michigan roadways in 2022--an increase of 3.7 percent from 2013.

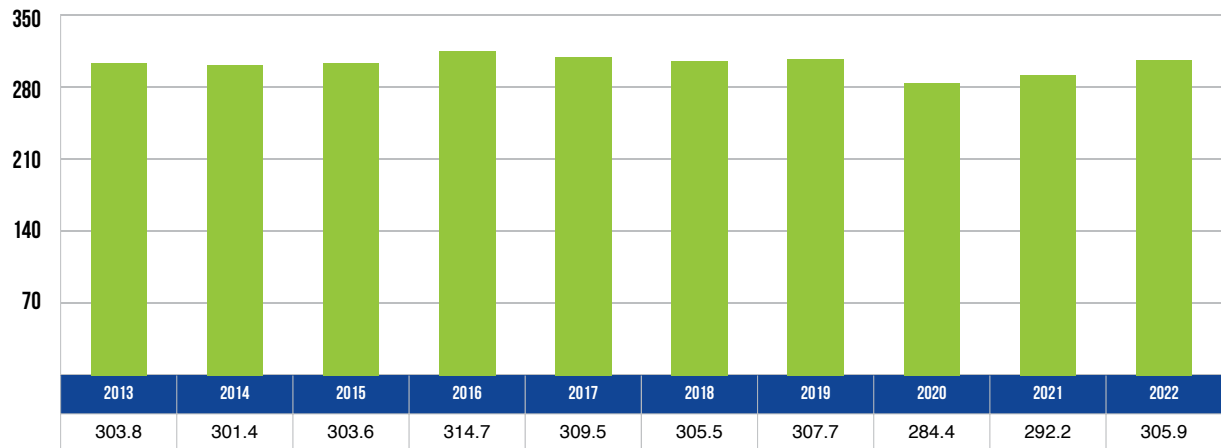
FATALITIES PER 100 MILLION VEHICLE MILES TRAVELED



The death rate of 1.171 fatalities per 100 million VMT in 2022 was an increase of 17.1% from the death rate of 1.000 in 2013.

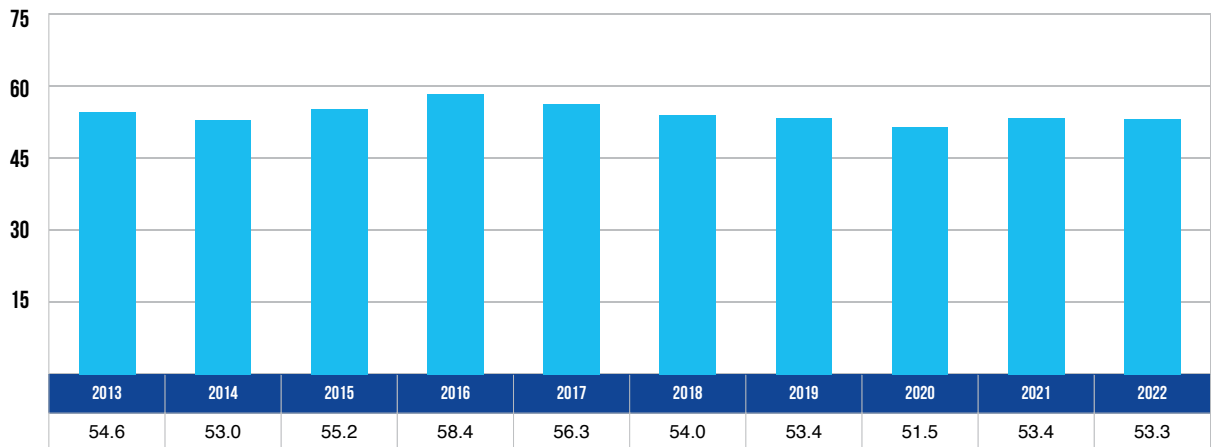
10 YEAR TRENDS-STATEWIDE (CONTINUED)

TOTAL CRASHES PER 100 MILLION VEHICLE MILES TRAVELED



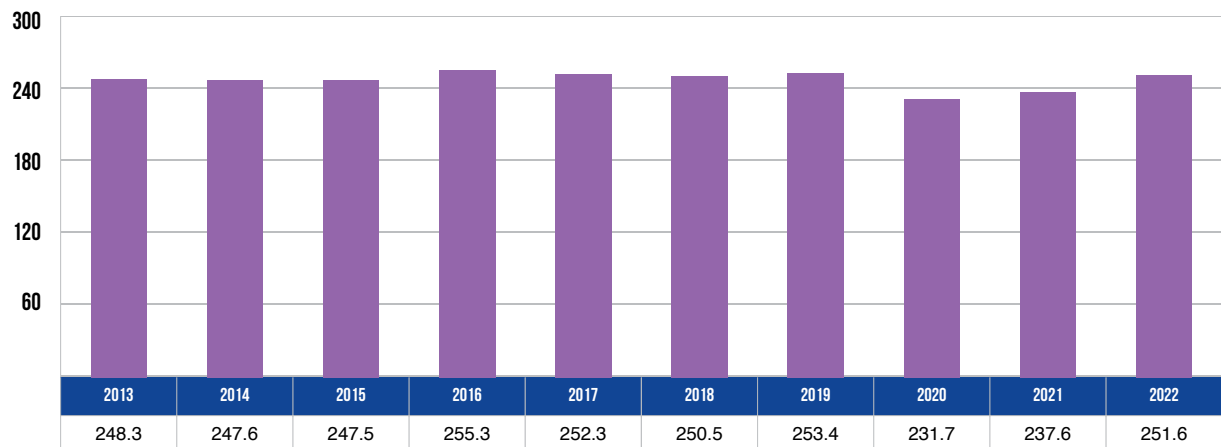
The total crash rate of 305.9 crashes in 2022 was a 0.7 percent increase from 2013.

INJURY CRASHES PER 100 MILLION VEHICLE MILES TRAVELED



The injury crash rate of 53.3 crashes in 2022 was a 2.5 percent decrease from 2013.

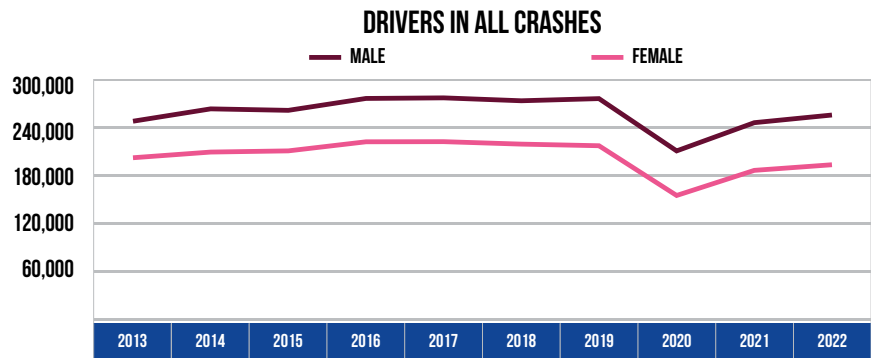
PROPERTY DAMAGE CRASHES PER 100 MILLION VEHICLE MILES TRAVELED



The property damage crash rate of 251.6 crashes in 2022 was a 1.3 percent increase from 2013.

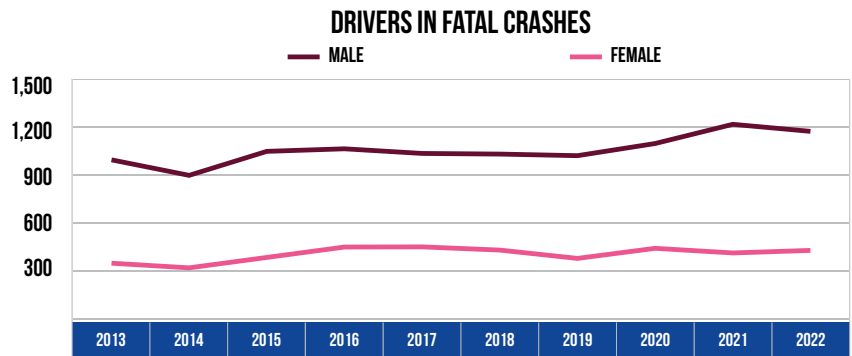
10 YEAR TRENDS-STATEWIDE (CONTINUED)

DRIVERS IN ALL CRASHES		
Year	Male	Female
2013	246,908	201,264
2014	262,359	208,359
2015	260,508	209,843
2016	275,382	221,200
2017	276,112	221,365
2018	272,480	218,294
2019	275,180	216,274
2020	209,816	154,100
2021	245,096	185,493
2022	254,675	192,509



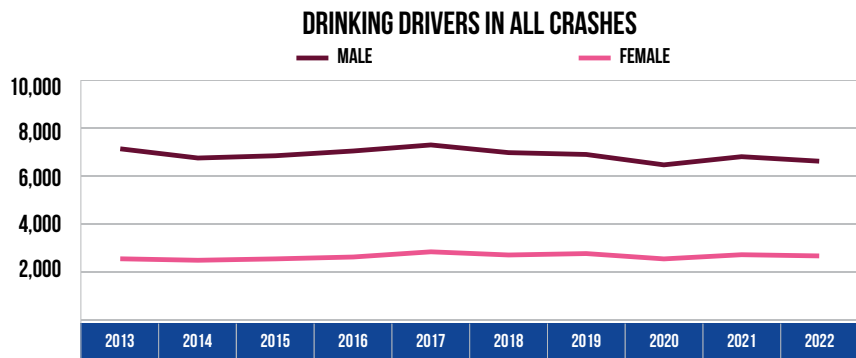
Male drivers accounted for 57.0 percent of all drivers in crashes during 2022, which was up from 55.1 percent in 2013. Female drivers accounted for 43.0 percent of all drivers in crashes during 2022, which was down from 44.9 percent in 2013.

DRIVERS IN FATAL CRASHES		
Year	Male	Female
2013	990	344
2014	893	315
2015	1,043	380
2016	1,059	445
2017	1,030	446
2018	1,026	426
2019	1,016	374
2020	1,092	437
2021	1,212	408
2022	1,168	424



Male drivers made up 73.4 percent of all drivers in fatal crashes in 2022, which was down from 74.2 percent in 2013. Female drivers made up 26.6 percent of all drivers in fatal crashes in 2022, which was up from 25.8 percent in 2013.

DRINKING DRIVERS IN ALL CRASHES		
Year	Male	Female
2013	7,105	2,522
2014	6,721	2,461
2015	6,816	2,519
2016	7,014	2,597
2017	7,266	2,813
2018	6,946	2,681
2019	6,869	2,740
2020	6,436	2,518
2021	6,777	2,692
2022	6,589	2,642

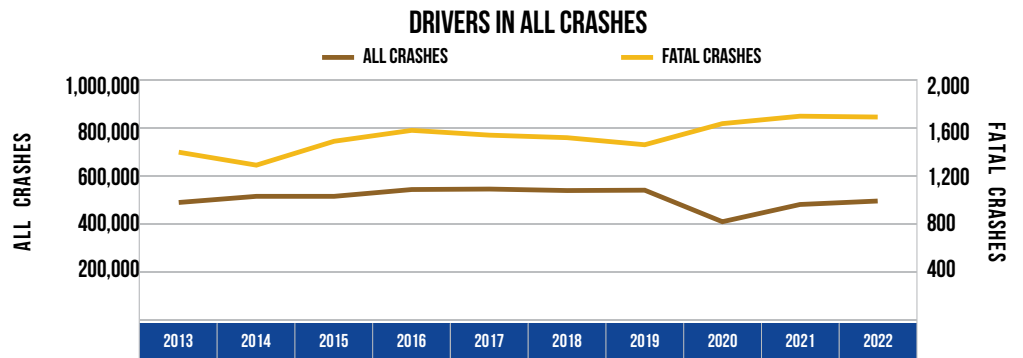


In 2022, males represented 71.4 percent of all drinking drivers, which was down from 73.8 percent in 2013. Females represented 28.6 percent of all drinking drivers in 2022, which was up from 26.2 percent in 2013.

Note: 72 drivers in all crashes, zero drivers in fatal crashes, and one drinking driver were coded as non-binary in 2022 and are not included in the tables. 43,304 drivers in all crashes, 89 drivers in fatal crashes, and four drinking drivers were coded as unknown gender in 2022 and are not included in the tables.

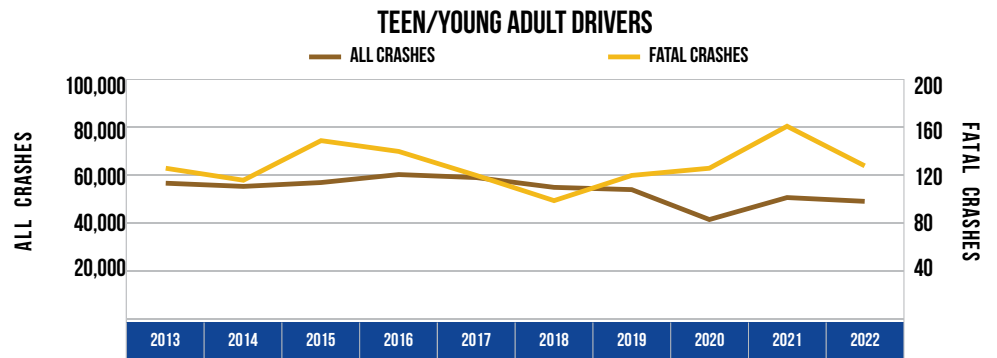
10 YEAR TRENDS-STATEWIDE (CONTINUED)

DRIVERS IN ALL CRASHES		
Year	All Crashes	Fatal Crashes
2013	484,446	1,388
2014	510,086	1,280
2015	510,074	1,479
2016	538,412	1,570
2017	540,387	1,530
2018	534,223	1,509
2019	535,721	1,450
2020	404,286	1,626
2021	476,129	1,688
2022	490,560	1,681



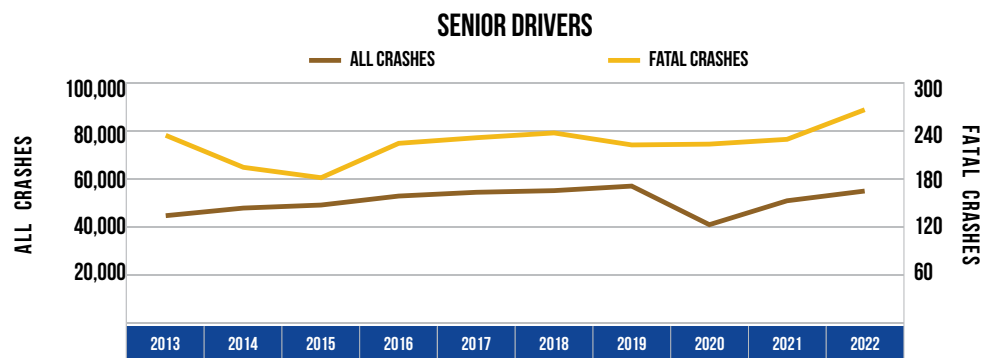
The number of drivers involved in all crashes increased 1.3 percent over the 10-year period. The number of drivers involved in fatal crashes increased 21.1 percent over the 10-year period.

TEEN/YOUNG ADULT DRIVERS (AGE 16-20)		
Year	All Crashes	Fatal Crashes
2013	56,264	125
2014	54,935	115
2015	56,544	148
2016	59,865	139
2017	58,607	119
2018	54,530	98
2019	53,586	119
2020	41,119	125
2021	50,282	160
2022	48,703	127



Teen/young adult drivers (age 16-20) represented 6.0 percent of the licensed drivers in 2022. The number of teen/young adult drivers in all crashes decreased by 13.4 percent since 2013. Their involvement in fatal crashes increased 1.6 percent during the same time period.

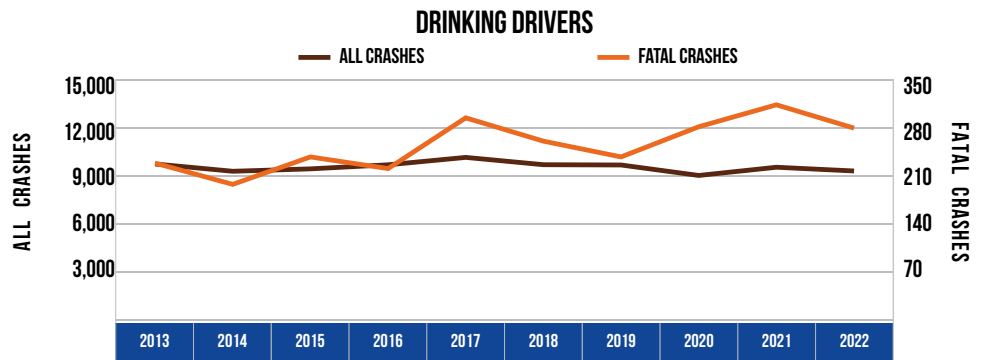
SENIOR DRIVERS (AGE 65 & OVER)		
Year	All Crashes	Fatal Crashes
2013	44,183	233
2014	47,356	193
2015	48,615	180
2016	52,362	223
2017	53,934	230
2018	54,621	236
2019	56,515	221
2020	40,432	222
2021	50,398	228
2022	54,456	265



Senior drivers (age 65 and over) represented 24.3 percent of the licensed drivers in 2022. The number of drivers age 65 and over in all crashes increased 23.3 percent since 2013. Senior driver involvement in fatal crashes increased 13.7 percent during the same time period.

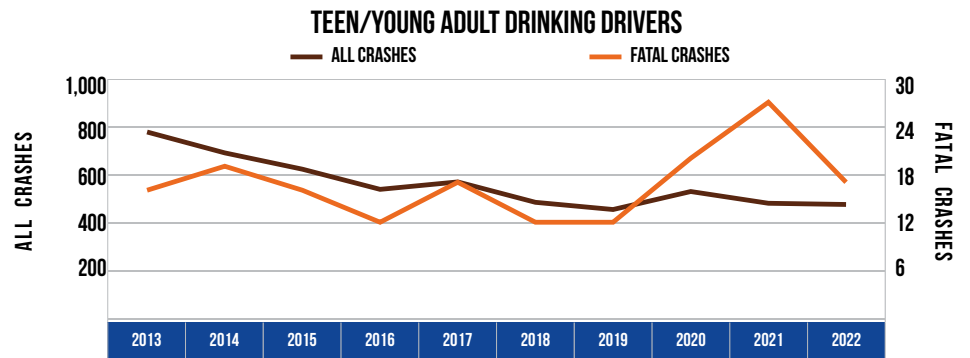
10 YEAR TRENDS-STATEWIDE (CONTINUED)

DRINKING DRIVERS		
Year	All Crashes	Fatal Crashes
2013	9,673	227
2014	9,218	196
2015	9,368	236
2016	9,623	219
2017	10,085	293
2018	9,628	259
2019	9,610	236
2020	8,956	280
2021	9,469	312
2022	9,236	278



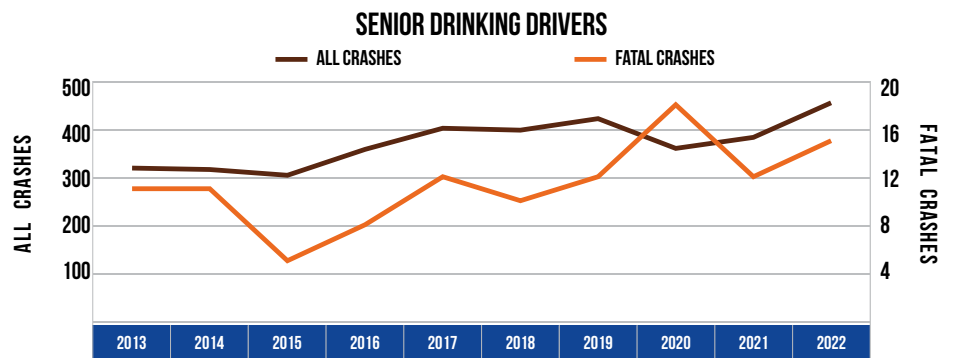
Drinking driver involvement in all crashes decreased by 4.5 percent from 2013 to 2022. Drinking driver involvement in fatal crashes increased by 22.5 percent during the same time period.

TEEN/YOUNG ADULT DRINKING DRIVERS (AGE 16-20)		
Year	All Crashes	Fatal Crashes
2013	776	16
2014	689	19
2015	621	16
2016	537	12
2017	568	17
2018	483	12
2019	453	12
2020	528	20
2021	479	27
2022	474	17



The number of teen/young adult drinking drivers (age 16-20) in all crashes decreased by 38.9 percent from 2013 to 2022. Their involvement in fatal crashes increased by 6.3 percent during the same time period.

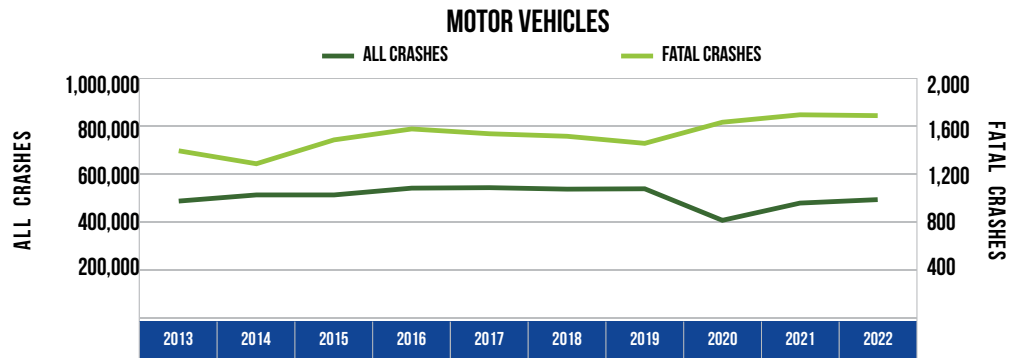
SENIOR DRINKING DRIVERS (AGE 65 & OVER)		
Year	All Crashes	Fatal Crashes
2013	318	11
2014	315	11
2015	303	5
2016	357	8
2017	401	12
2018	397	10
2019	421	12
2020	359	18
2021	382	12
2022	454	15



The number of senior drinking drivers (age 65 and over) in all crashes increased by 42.8 percent from 2013 to 2022. Their involvement in fatal crashes increased by 36.4 percent during the same time period.

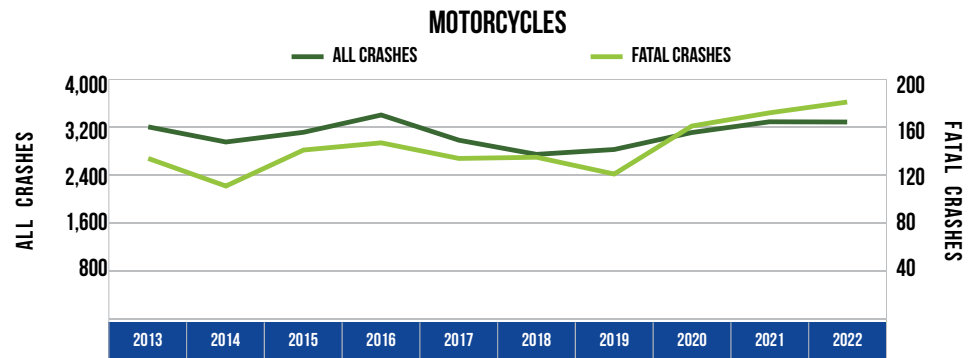
10 YEAR TRENDS-STATEWIDE (CONTINUED)

MOTOR VEHICLES		
Year	All Crashes	Fatal Crashes
2013	484,446	1,388
2014	510,086	1,280
2015	510,074	1,479
2016	538,412	1,570
2017	540,387	1,530
2018	534,223	1,509
2019	535,721	1,450
2020	404,286	1,626
2021	476,129	1,688
2022	490,560	1,681



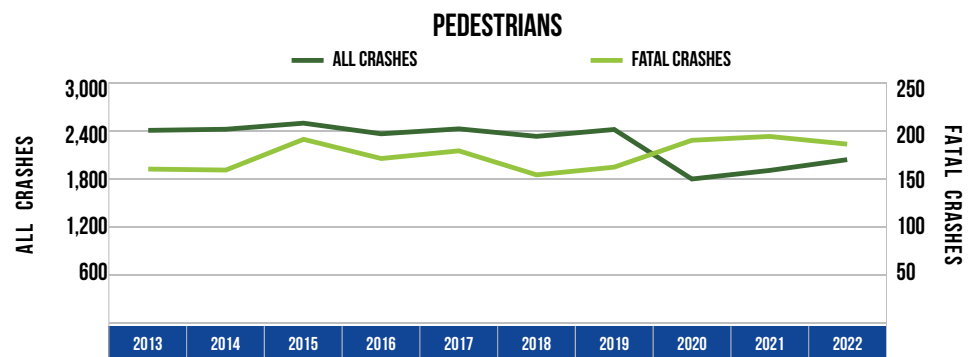
There were 490,560 motor vehicles involved in all crashes in 2022, up 1.3 percent from 2013. There were 1,681 motor vehicles involved in fatal crashes in 2022, up 21.1 percent from 2013.

MOTORCYCLES		
Year	All Crashes	Fatal Crashes
2013	3,186	133
2014	2,934	110
2015	3,096	140
2016	3,384	146
2017	2,964	133
2018	2,728	134
2019	2,809	120
2020	3,092	160
2021	3,271	171
2022	3,267	180



There were 3,267 motorcycles involved in crashes in 2022, a 2.5 percent increase from 2013. There were 180 motorcycles involved in fatal crashes in 2022, up 35.3 percent from 2013.

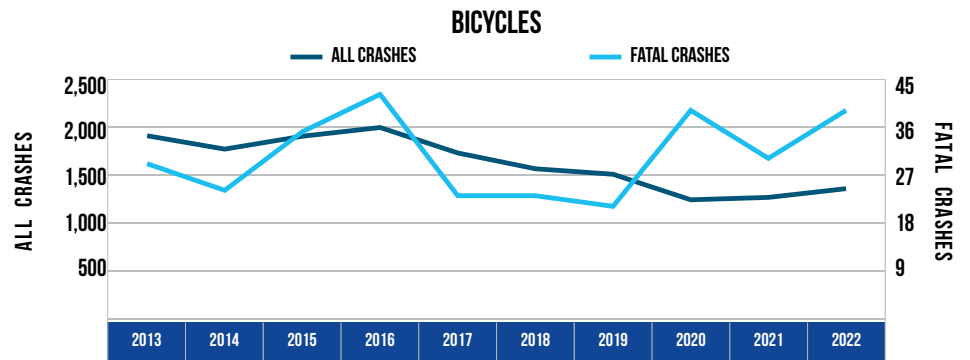
PEDESTRIANS		
Year	All Crashes	Fatal Crashes
2013	2,392	159
2014	2,406	158
2015	2,482	190
2016	2,349	170
2017	2,411	178
2018	2,317	153
2019	2,403	161
2020	1,784	189
2021	1,891	193
2022	2,026	185



There were 2,026 pedestrians involved in crashes in 2022, down 15.3 percent from 2013. There were 185 pedestrians involved in fatal crashes in 2022, up 16.4 percent from 2013.

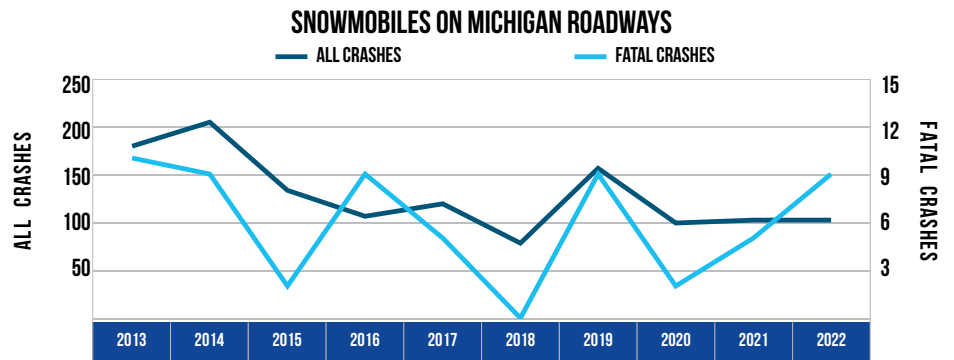
10 YEAR TRENDS-STATEWIDE (CONTINUED)

BICYCLES		
Year	All Crashes	Fatal Crashes
2013	1,902	29
2014	1,763	24
2015	1,897	35
2016	1,988	42
2017	1,723	23
2018	1,558	23
2019	1,501	21
2020	1,235	39
2021	1,260	30
2022	1,351	39



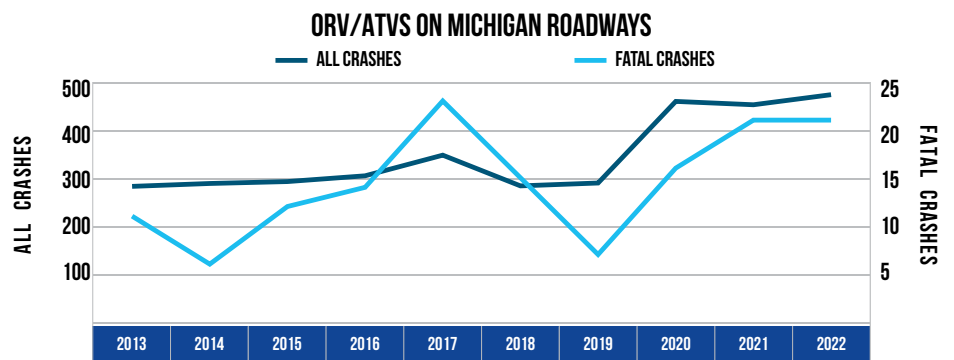
There were 1,351 bicycles involved in crashes in 2022, down 29.0 percent from 2013. There were 39 bicycles involved in fatal crashes in 2022, up 34.5 percent from 2013.

SNOWMOBILES ON MICHIGAN ROADWAYS		
Year	All Crashes	Fatal Crashes
2013	179	10
2014	204	9
2015	133	2
2016	106	9
2017	119	5
2018	78	0
2019	156	9
2020	99	2
2021	102	5
2022	102	9



There were 102 snowmobiles in crashes on roadways in 2022, down 43.0 percent from 2013. There were nine snowmobiles in fatal crashes, down 10.0 percent change from 2013.

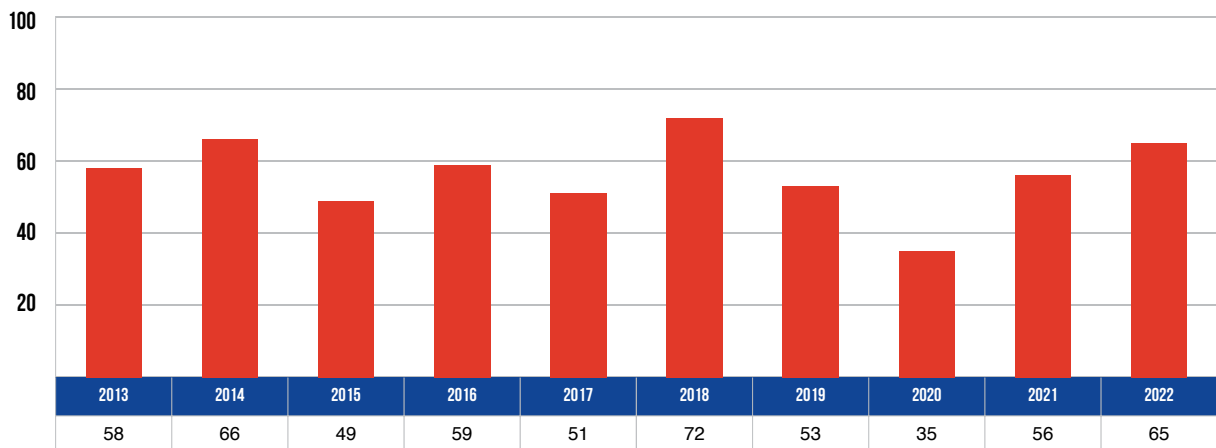
ORV/ATVS ON MICHIGAN ROADWAYS		
Year	All Crashes	Fatal Crashes
2013	282	11
2014	288	6
2015	292	12
2016	304	14
2017	347	23
2018	283	15
2019	289	7
2020	459	16
2021	452	21
2022	473	21



There were 473 ORV/ATVs in crashes on roadways in 2022, up 67.7 percent from 2013. There were 21 ORV/ATVs in fatal crashes, up 90.9 percent from 2013.

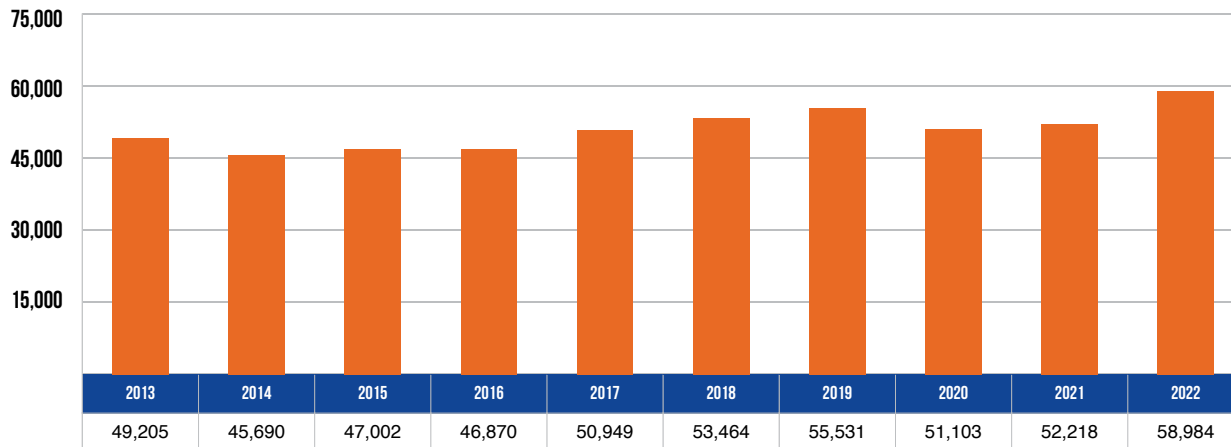
10 YEAR TRENDS-STATEWIDE (CONTINUED)

VEHICLE-TRAIN CRASHES



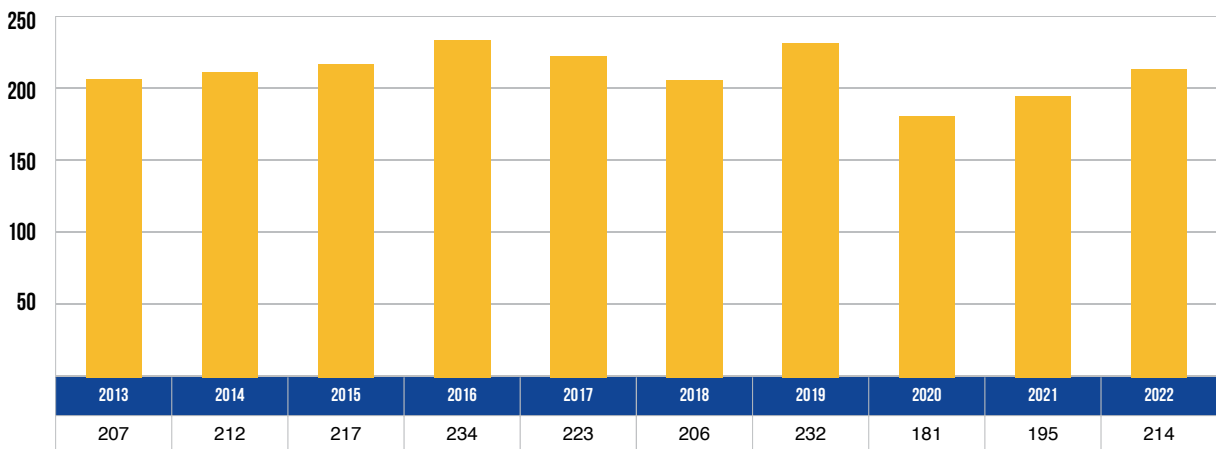
There were 65 vehicle-train crashes in 2022--an increase of 12.1 percent in the 10-year period.

VEHICLE-DEER CRASHES



There were 58,984 vehicle-deer crashes in 2022--an increase of 19.9 percent in the 10-year period.

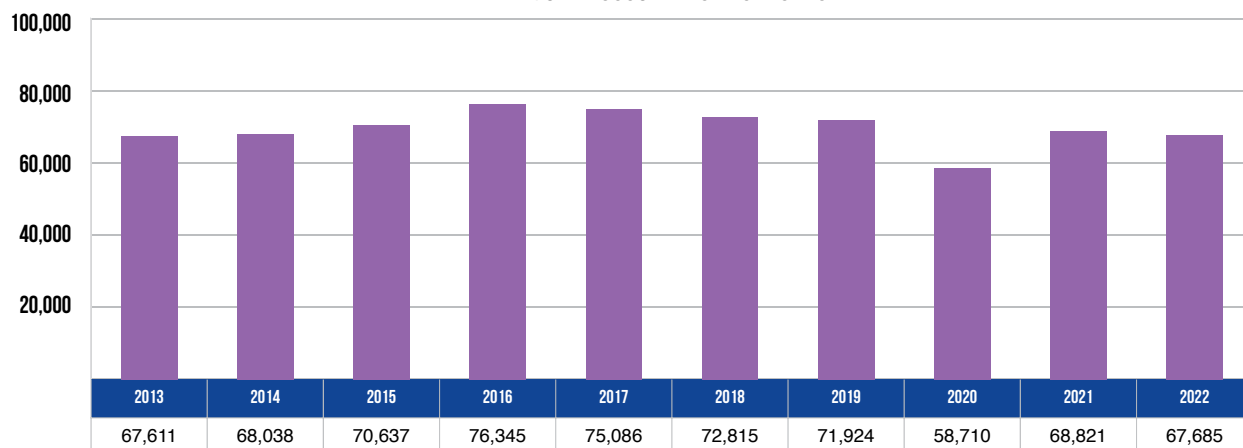
FARM EQUIPMENT CRASHES



There were 214 farm equipment crashes in 2022--an increase of 3.4 percent from 2013.

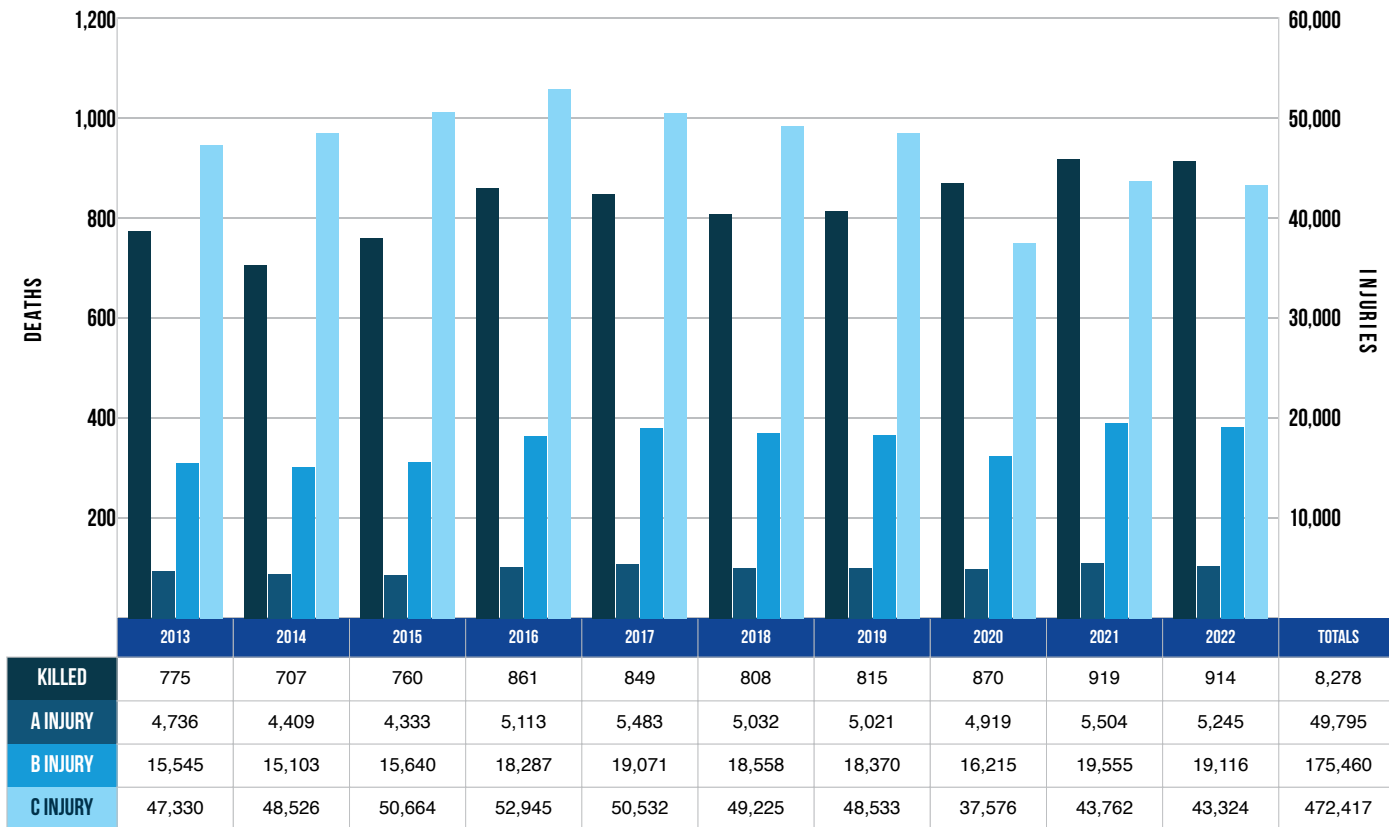
10 YEAR TRENDS-STATEWIDE (CONTINUED)

INJURED OCCUPANTS IN CRASHES



There were 67,685 occupants injured in crashes in 2022--an increase of 0.1 percent from 2013.

DEATH AND INJURY FOR CRASH-INVOLVED OCCUPANTS



Over the period from 2013 to 2022, occupant deaths increased 17.9 percent, A injuries increased 10.7 percent, B injuries increased 23.0 percent, and C injuries decreased 8.5 percent.

Note: These figures contain the number of occupants recorded as injured by the police officer on the UD-10.

10 YEAR TRENDS-STATEWIDE (CONTINUED)

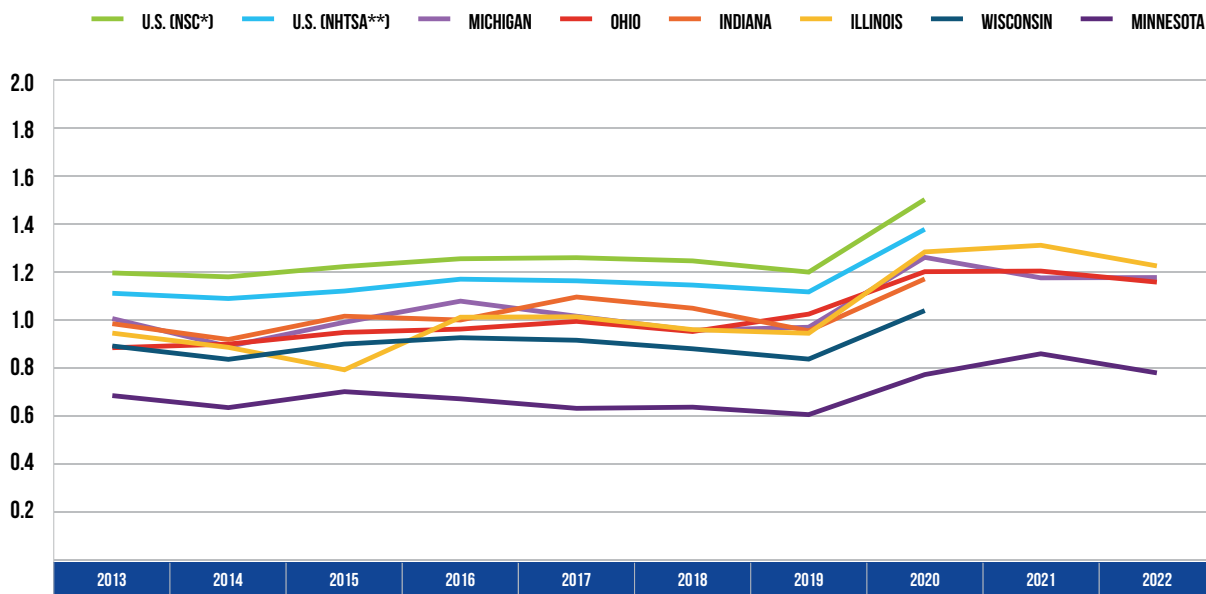
AVERAGE AGE OF DRIVERS IN CRASHES 2013 - 2022



Over the 10-year period, reflecting the demographic trend of increasing age in the general population, the average age of drivers involved in all crashes increased 2.1 percent. The age of drivers involved in fatal crashes increased 24.0 percent. The average age of drinking drivers in crashes decreased 14.9 percent. The average age of drinking drivers in fatal crashes increased 2.3 percent.

10 YEAR TRENDS-STATEWIDE (CONTINUED)

FATALITIES PER 100 MILLION VMT 2013 - 2022



YEAR	U.S. (NSC*)	U.S. (NHTSA**)	MICHIGAN	OHIO	INDIANA	ILLINOIS	WISCONSIN	MINNESOTA
2013	1.2	1.1	1.0	0.9	1.0	0.9	0.9	0.7
2014	1.2	1.1	0.9	0.9	0.9	0.9	0.8	0.6
2015	1.2	1.1	1.0	0.9	1.0	0.8	0.9	0.7
2016	1.2	1.2	1.1	1.0	1.0	1.0	0.9	0.7
2017	1.3	1.2	1.0	1.0	1.1	1.0	0.9	0.6
2018	1.2	1.1	1.0	0.9	1.0	1.0	0.9	0.6
2019	1.2	1.1	1.0	1.0	0.9	0.9	0.8	0.6
2020	1.5	1.4	1.3	1.2	1.2	1.3	1.0	0.8
2021	-	-	1.2	1.2	-	1.3	-	0.9
2022	-	-	1.2	1.2	-	1.2	-	0.8

* National Safety Council (NSC) reports traffic and nontraffic deaths within a year of the crash.

**National Highway Traffic Safety Administration (NHTSA) reports only traffic deaths that occur within 30 days of the crash.

U.S. data for this table and tables on the following page were provided by the National Safety Council [3], the National Highway Traffic Safety Administration [4], and the Federal Highway Administration [5]. State data for this table and tables on the following page were provided by Ohio [6], Indiana [7], Illinois [8], Wisconsin [9], and Minnesota [10].

10 YEAR TRENDS-STATEWIDE (CONTINUED)

YEAR	U.S. (NSC) FATALITIES	U.S. (NHTSA) FATALITIES	MICHIGAN FATALITIES	OHIO FATALITIES	INDIANA FATALITIES	ILLINOIS FATALITIES	WISCONSIN FATALITIES	MINNESOTA FATALITIES
2013	35,369	32,850	951	990	777	991	527	387
2014	35,400	32,675	876	1,008	743	924	498	361
2015	38,300	35,092	963	1,110	829	829	555	411
2016	40,200	37,461	1,064	1,133	821	1,078	588	392
2017	40,231	37,133	1,028	1,179	911	1,090	594	358
2018	40,000	36,750	974	1,068	873	1,031	576	381
2019	38,800	36,120	985	1,155	800	1,010	551	364
2020	42,338	38,824	1,083	1,230	896	1,201	593	394
2021	-	-	1,131	1,356	-	1,334	-	488
2022	-	-	1,123	1,275	-	1,268	-	444

YEAR	U.S. (FHWA) VMT	MICHIGAN VMT	OHIO VMT	INDIANA VMT	ILLINOIS VMT	WISCONSIN VMT	MINNESOTA VMT
2013	2,972	95.1	112.7	79.4	105.5	59.5	57.0
2014	3,016	99.1	112.8	81.4	105.0	60.0	57.4
2015	3,148	97.8	117.8	82.1	105.4	62.1	59.1
2016	3,218	99.2	118.5	82.6	107.2	63.9	58.9
2017	3,209	101.8	119.3	83.6	108.2	65.3	57.2
2018	3,225	102.4	112.9	83.7	108.1	65.9	60.4
2019	3,251	102.2	113.4	84.3	107.6	66.3	60.7
2020	2,830	86.3	102.9	76.9	94.0	57.4	51.4
2021	3,229	96.7	113.2	84.1	102.2	65.0	57.2
2022	3,169	95.9	110.7	87.9	104.0	-	57.4

VMT described in billions of miles